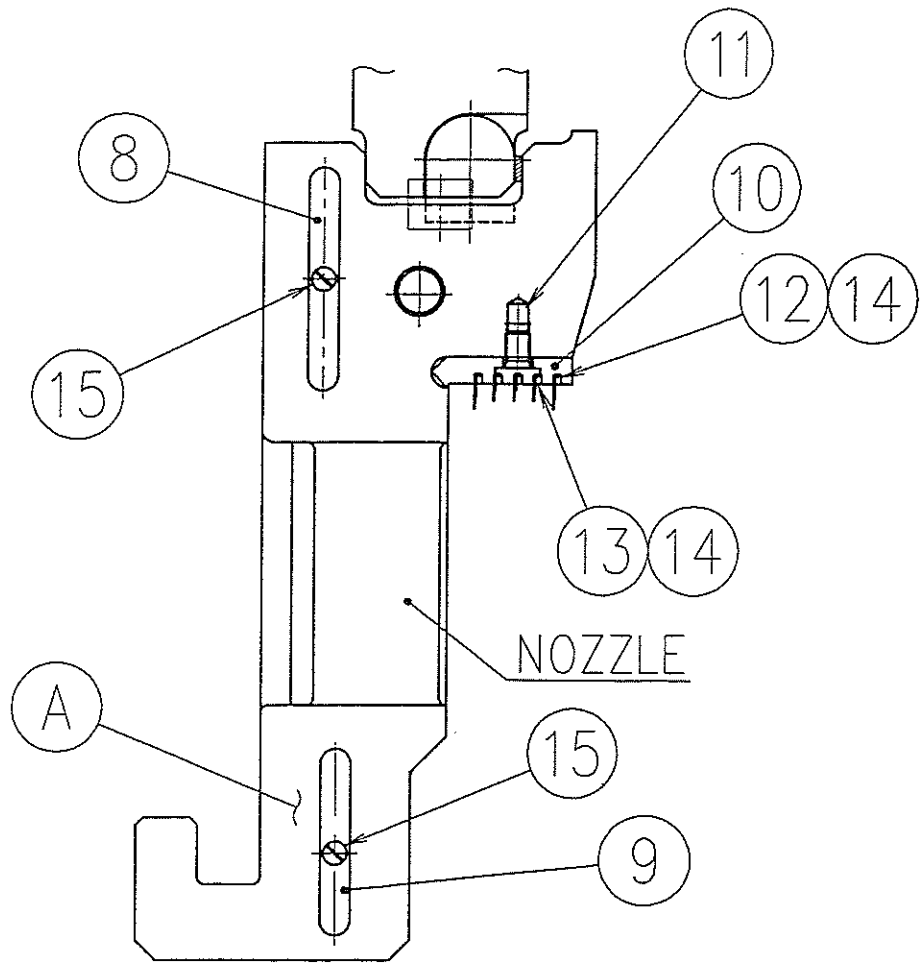


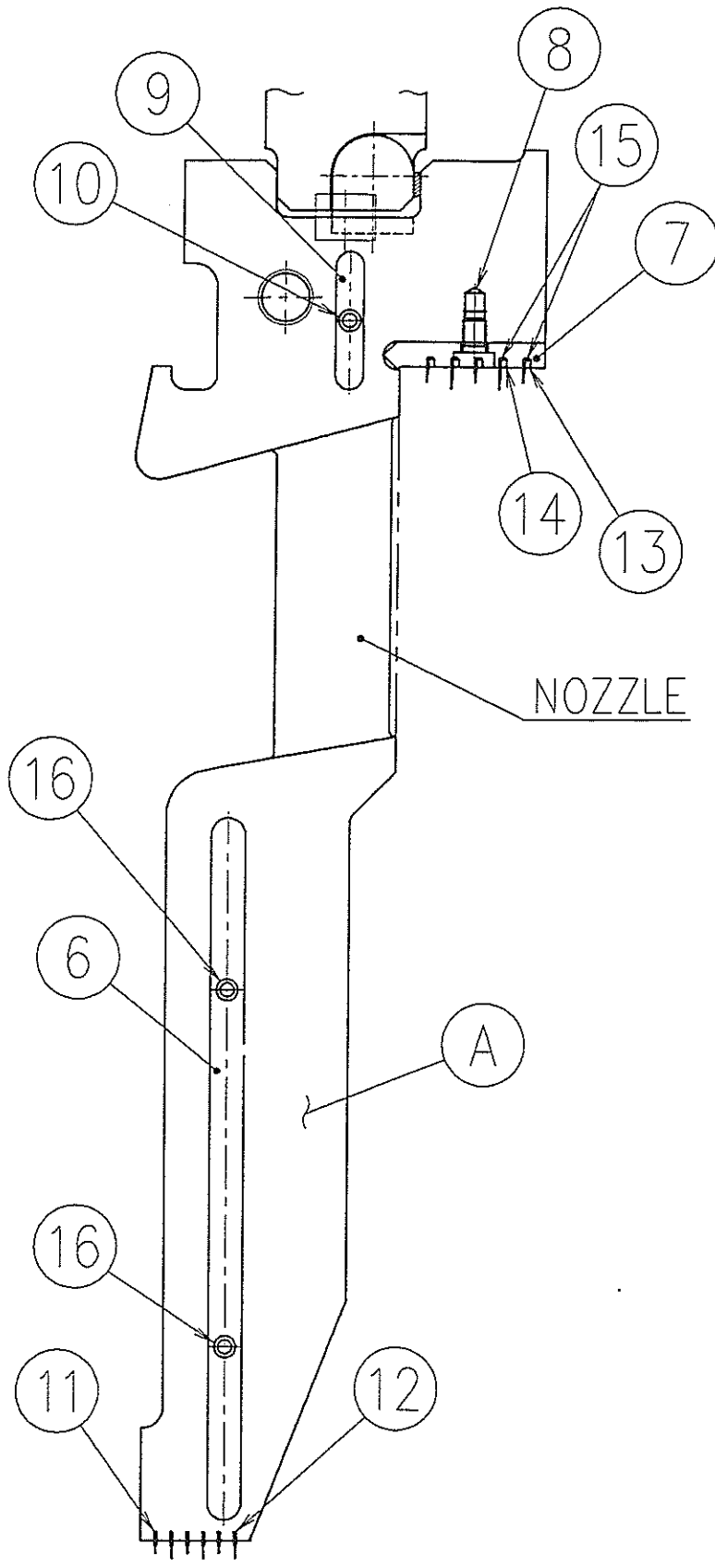


Assembly drawing No.	Marks	Item No.	Item name
N26-R10-4134-A (1st stage)	A	IM-N26-R10-4134-A	1st stage diaphragm ass'y
	⑧	IM-N26-R10-4134-8	Horizontal joint key
	⑨	IM-N26-R10-4134-9	Horizontal joint key
	⑩	IM-N26-R10-4134-10	Liner
	⑪	IM-N26-R10-4134-11	Set screw
	⑫	IM-N26-R10-4134-12	Seal strip
	⑬	IM-N26-R10-4134-13	Seal strip
	⑭	IM-N26-R10-4134-14	Locking strip
	⑮	IM-N26-R10-4134-15	Set screw
N26-R10-4135-A (2nd stage)	A	IM-N26-R10-4135-A	2nd stage diaphragm ass'y
	⑥	IM-N26-R10-4135-6	Horizontal joint key
	⑦	IM-N26-R10-4135-7	Liner
	⑧	IM-N26-R10-4135-8	Set screw
	⑨	IM-N26-R10-4135-9	Horizontal joint key
	⑩	IM-N26-R10-4135-10	Set screw
	⑪	IM-N26-R10-4135-11	Seal strip
	⑫	IM-N26-R10-4135-12	Seal strip
	⑬	IM-N26-R10-4135-13	Seal strip
	⑭	IM-N26-R10-4135-14	Seal strip
	⑮	IM-N26-R10-4135-15	Locking strip
N26-R10-4136-A (3rd stage)	A	IM-N26-R10-4136-A	3rd stage diaphragm ass'y
	⑥	IM-N26-R10-4136-6	Horizontal joint key
	⑦	IM-N26-R10-4136-7	Liner
	⑧	IM-N26-R10-4136-8	Set screw
	⑨	IM-N26-R10-4136-9	Horizontal joint key
	⑩	IM-N26-R10-4136-10	Set screw
	⑪	IM-N26-R10-4136-11	Seal strip
	⑫	IM-N26-R10-4136-12	Seal strip
	⑬	IM-N26-R10-4136-13	Seal strip
	⑭	IM-N26-R10-4136-14	Seal strip
⑮	IM-N26-R10-4136-15	Locking strip	
⑯	IM-N26-R10-4136-16	Set screw	



1st STAGE

IM-N26-R10-4134



2nd STAGE

IM-N26-R10-4135