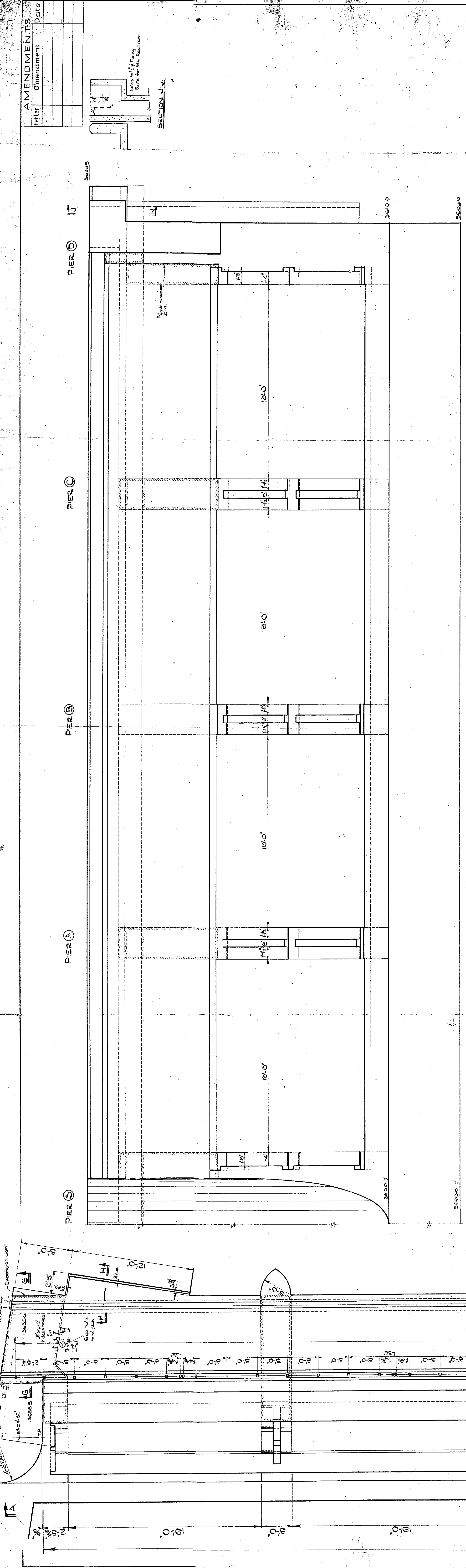
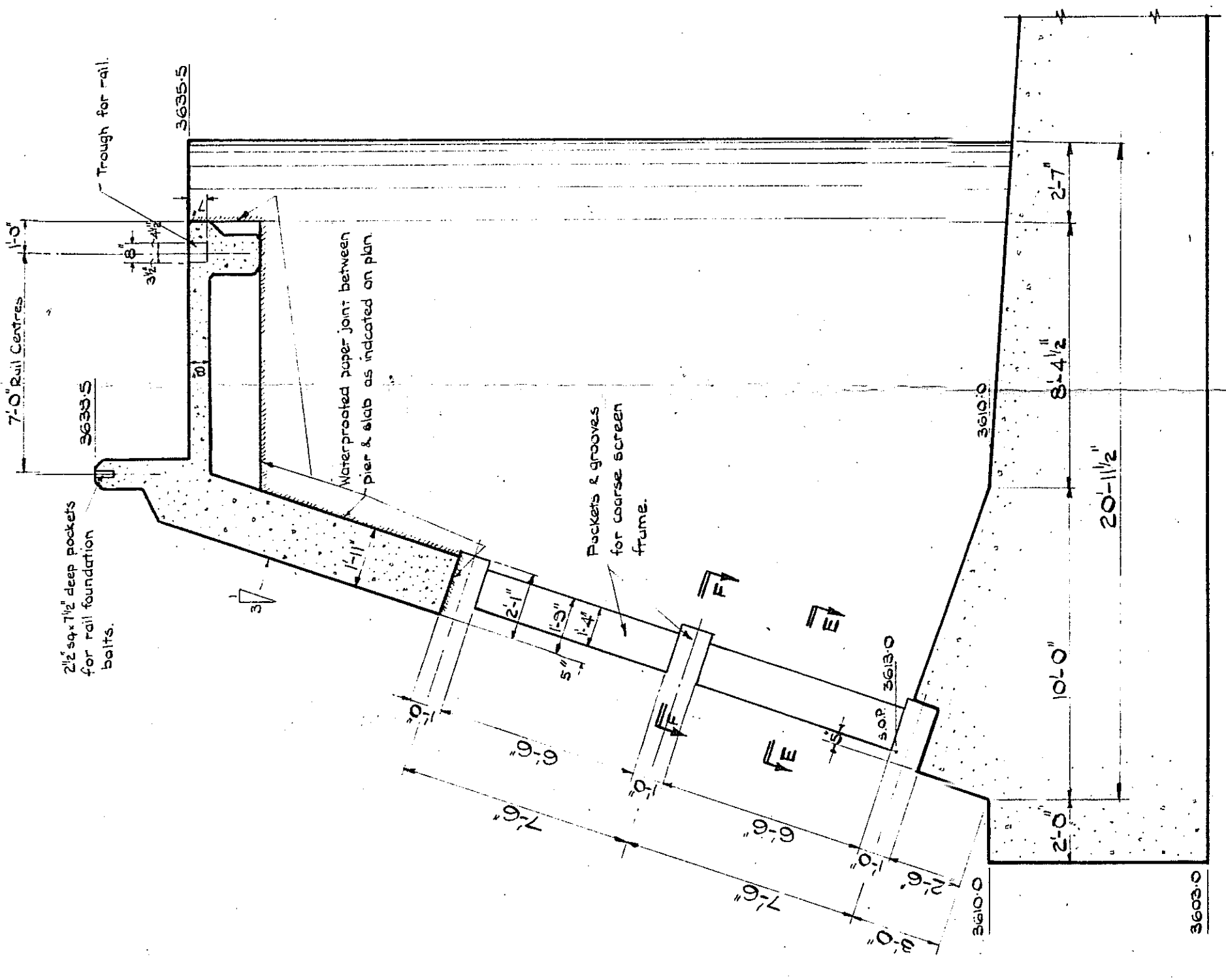


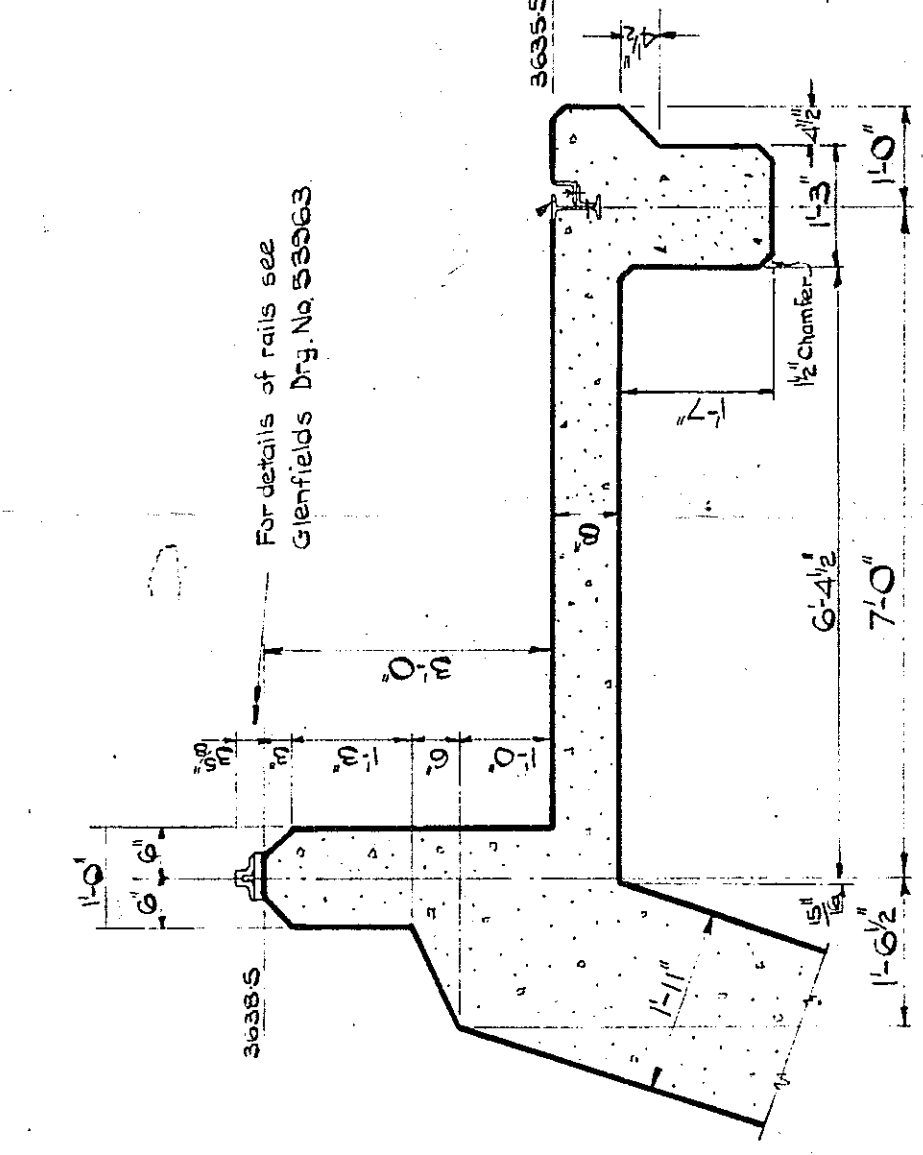
AMENDMENTS	
Letter	Date



ELEVATION A-A

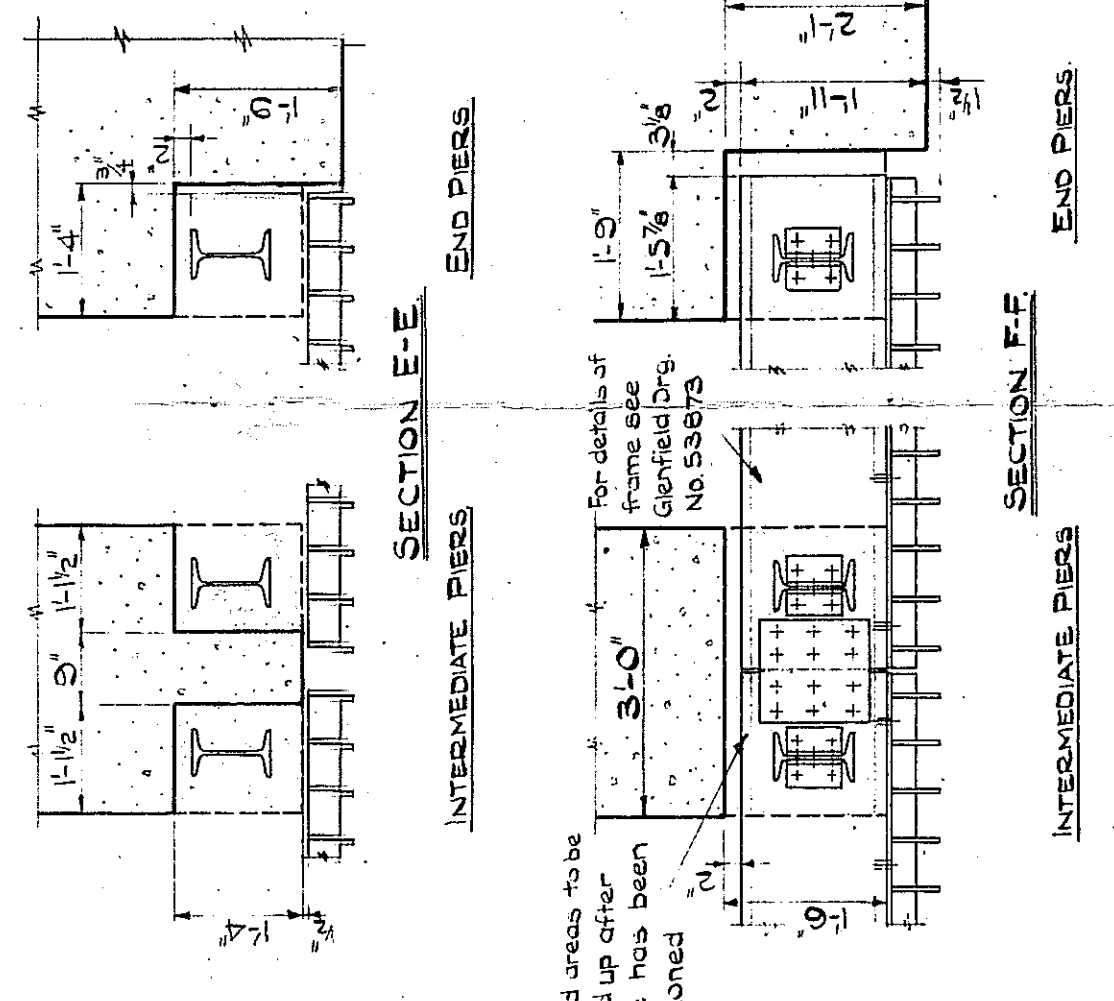


SECTION B-B



SECTION G-G

SECTION SHOWING RAILS IN POSITION



SECTION E-E

SECTION F-F

ELEVATION C-C

HAIRDRAILING TO BE ADDED AS AMENDMENT A.  
**EAST AFRICAN POWER & LIGHTING CO. LTD**  
**LOW TANA HYDRO-ELECTRIC DEVELOPMENT**  
**CONTRACT 6968**  
**MERILA INTAKE**  
**DETAILS OF PIERS FOR COARSE SCREENS**  
**& BRIDGE FOR GANTRY**  
 BALFOUR BEATTY & CO. LIMITED  
 66 QUEEN STREET,  
 LONDON E.C.4.  
 DATE 5-4-54

SCALE 1/4" & 1/2" TO 1'-0"

DRG. N° C.E.5540

Author	Checked	Drawn	Date